

**Exhibit "N"**  
**(Map of 32.66 Acre Tract - Also known as 31 Acre Tract)**

**EXHIBIT "N"**



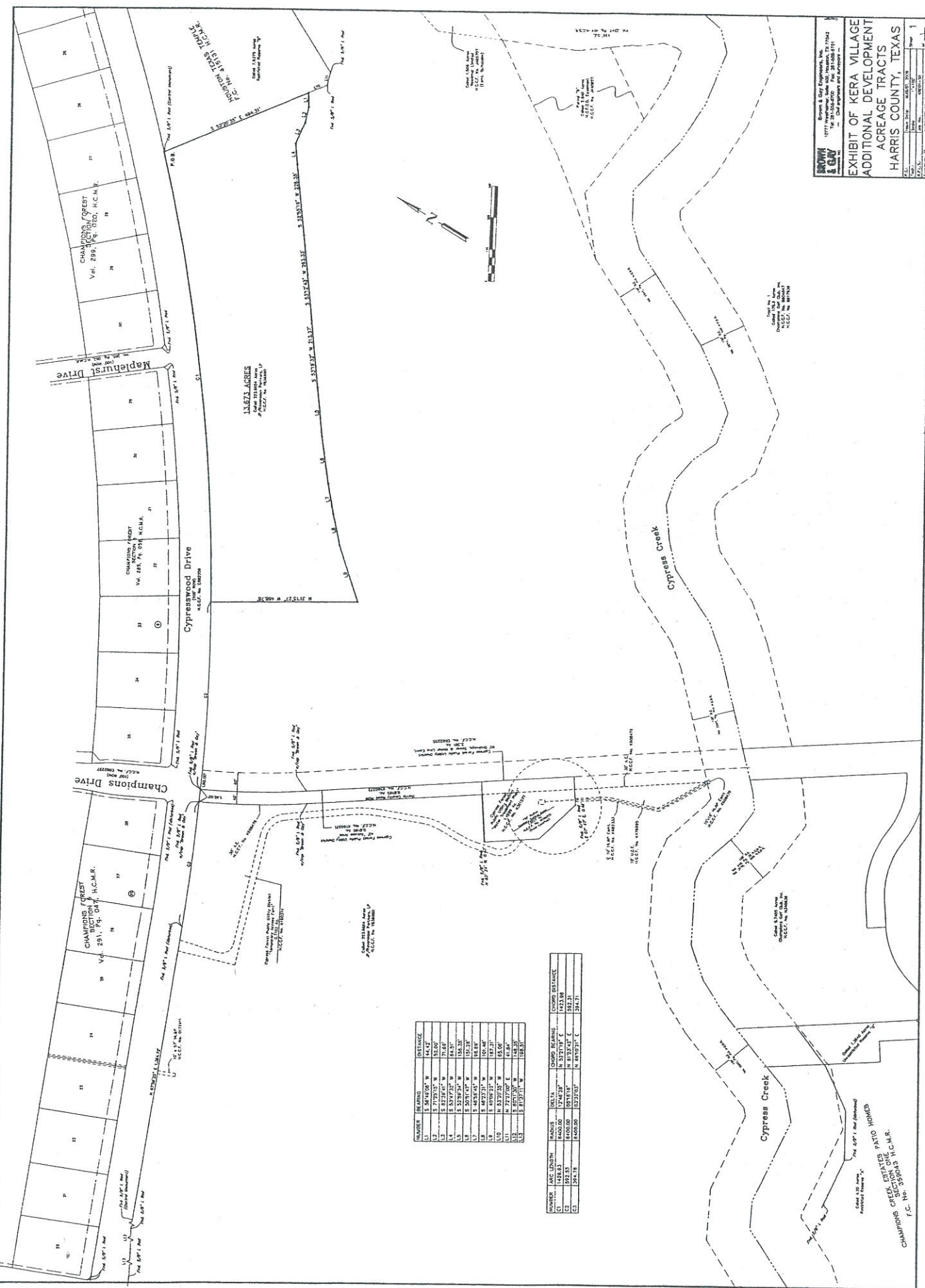
**CYPRESS FOREST PUD 32.66 ACRE-TRACT  
WITHIN THE RAVENEAUX GOLF COURSE**

**Exhibit "O"**  
**(Metes and Bounds and Map of 13.67 – Also known as 15 Acres)**

**BROWN & GAY**  
 Surveyors & Engineers, Inc.  
 10771 West Loop South, Suite 200, Houston, Texas 77042  
 Phone: (713) 865-5500  
 Telex: 770000  
 Cable: BROWN & GAY

**EXHIBIT OF KERA VILLAGE  
 ADDITIONAL DEVELOPMENT  
 ACREAGE TRACTS  
 HARRIS COUNTY, TEXAS**

Sheet 1 of 1



NUMBER	BEARING	DISTANCE
11	S 36°18'00" W	44.42'
12	S 71°29'00" W	33.60'
13	S 83°15'00" W	71.63'
14	S 83°15'00" W	128.25'
15	S 50°31'00" W	151.28'
16	S 49°35'00" W	188.83'
17	S 49°09'31" W	197.21'
18	S 27°20'00" W	85.00'
19	S 87°00'00" E	81.00'
20	S 81°32'11" W	128.25'

NUMBER	ARC LENGTH	RADIUS	DELTA	CHORD BEARING	CHORD DISTANCE
C1	105.53	1452.00	105.53°	S 32°11'00" E	1453.98
C2	294.78	1460.00	123.73°	N 67°02'21" E	1244.21

CHAMPIONS CREEK ESTABLISH PATIO HOLES  
 CHAMPIONS CREEK ESTABLISH PATIO HOLES  
 F.C. No. 338493 H.C.M.R.